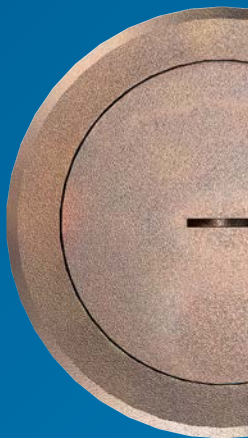
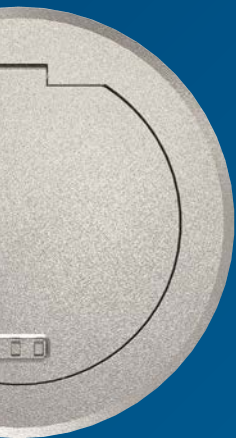


Cable routing and
room connection systems

Floor socket outlets

Multiple connection options
in a small space



:hager

Flexibly supply large rooms

Providing a flexible power and data supply in large rooms is a real challenge. Our new floor socket outlets meet this challenge with a robust design, subtle appearance and flexible connection options. Their high load capacity and degree of protection also makes these sockets ideal for floors that require dry or wet cleaning in places that are open to the public with a high footfall, heavy public traffic, or rooms that are subject to heavy loads. Their attractive cover and colour options offer maximum versatility. A mounting system for all floor types simplifies installation. You will find the right connection for every floor with our new floor socket outlets.



High protection

- IP66 degree of protection:
Can be used on floors that require wet cleaning
- High load capacity of up to 1000 kg:
Floor box can be driven over
- Cone enables surge water protection while in use

Attractive design

- Three cover variants, five colours
- Up to four connection options
- Subtle appearance:
suitable for any floor covering

Simple installation

- Can be used anywhere
- Mounting system for all floor types
- Practical formwork element simplifies installation



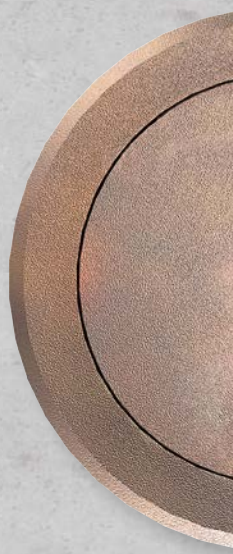


Ideal for

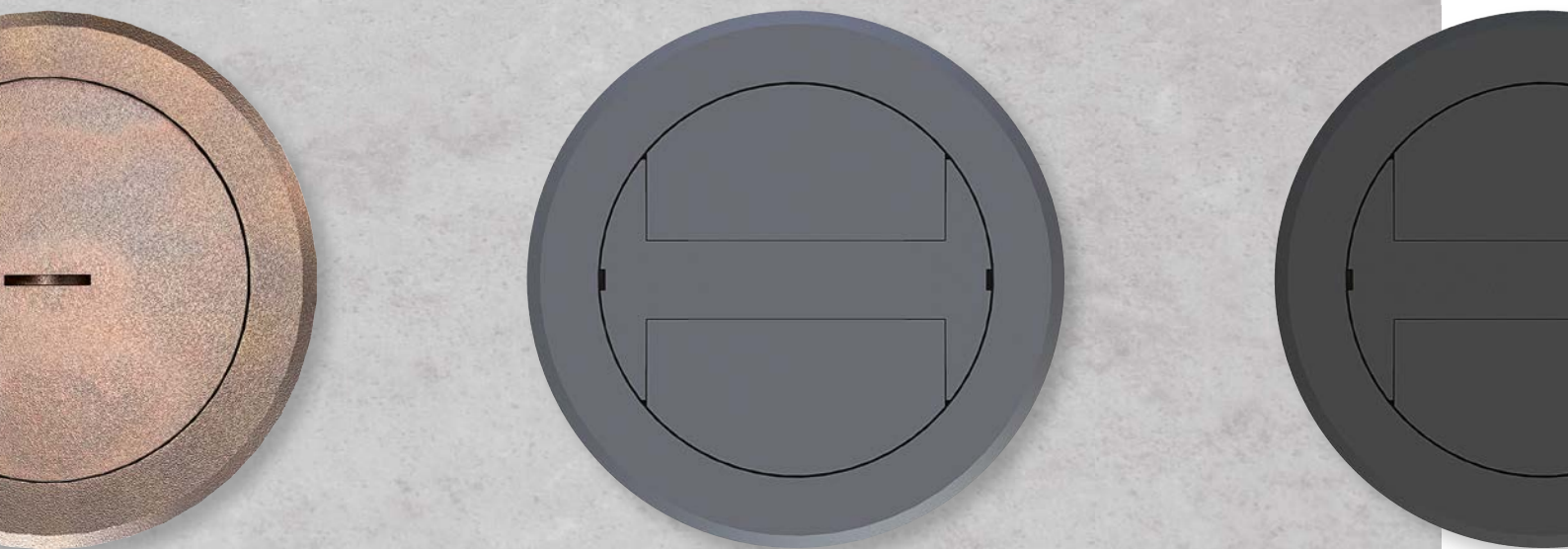
- Places open to the public:
e.g. retail premises, supermarkets,
hotels, fitness studios, car
dealerships
- Educational institutions: e.g schools,
universities, nurseries
- Office and administrative buildings



**Each floor
has its
perfect cover**



These new floor socket outlets will literally “gain ground” with your customers: In addition to the connections on the wall, they offer discreet connection options in the middle of the room and thus more possibilities for use. The attractive variety of designs offers the right cover for every floor.



Designs and colours

The floor socket outlets are available with three different covers and five colour variants: Metal hinged cover and metal cover with cone, each in silver, aged copper or aged brass. As well as plastic covers in grey or black.

Multiple connection options in a small space

The new floor boxes have a modular design: They consist of an installation box, appliance receptacle and a cover variant. All components are perfectly matched to each other. Our practical installation accessories ensure quick and easy installation on any flooring.

Up to four connection options

The compact floor socket outlet makes optimum use of the connection space: Two 230-V SCHUKO® socket outlets and two data/multimedia connections are contained in an installation diameter of only 122 mm. All slots can be used simultaneously.





Perfectly fitting covers

All cover variants have a diameter of 150 mm and fit on the same installation box. This simplifies ordering, logistics and installation.



Uniform installation box

Due to the intelligent design, the different types of current for power and data connections are safely separated from each other. Two strain relief devices can be mounted on the bottom of the box and also on the appliance receptacle. This provides additional safety during installation and operation. A clamping ring ensures a secure fit in the base plate for thin substrates.

Read more about the installation box on page 14.



Practical formwork element

The formwork element (accessory) made of halogen-free plastic enables unrivalled quick and clean installation on screed floors.

Read more about screed installation on page 16.



High load capacity:

- 10 kN over a large area
- 3 kN over a small area
- Can be driven over by a car

Splash-protected:

- IP66 degree of protection when closed
- Surge water protection while in use
- Can be used on floors that require wet cleaning according to DIN EN 50085-2-2



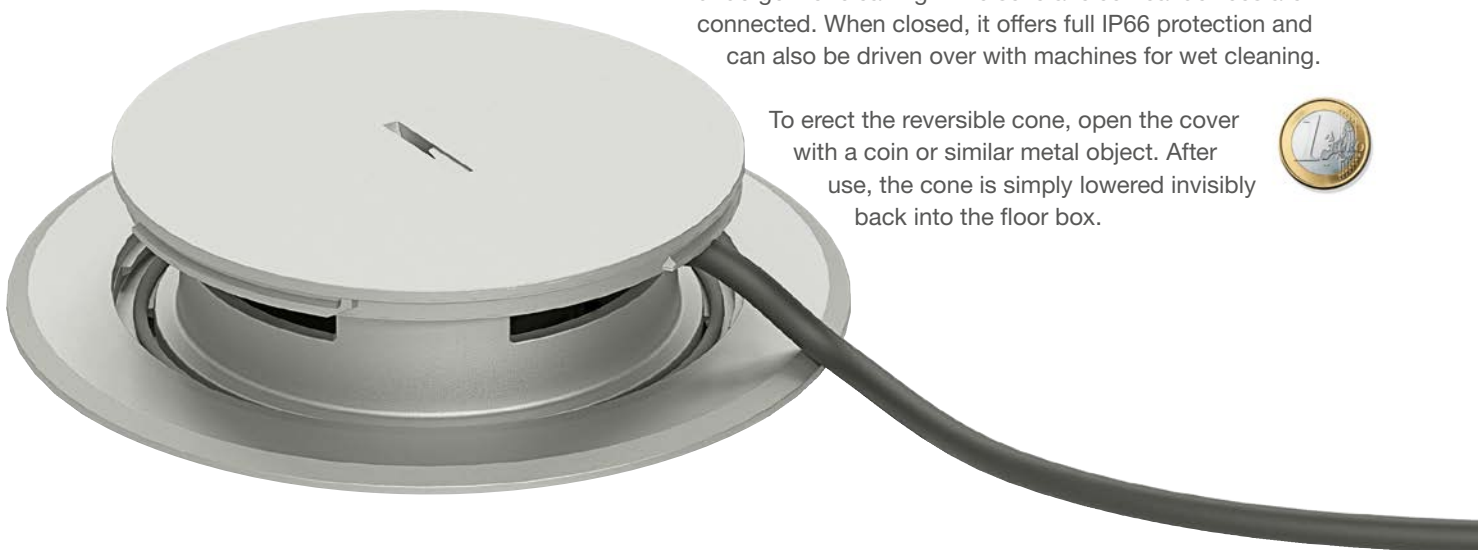
Let the water flow — It's no problem!

The robust metal cover with integrated cone protects the floor installation not only from heavy loads but also from water infiltration. The high IP66 degree of protection makes it suitable for all indoor floors that require wet cleaning.

Perfect splash water protection

The cone offers several advantages for the user. It can be extended to a height of up to 10 mm to prevent water from entering the installation space. This means that the floor can undergo wet cleaning while several electrical devices are connected. When closed, it offers full IP66 protection and can also be driven over with machines for wet cleaning.

To erect the reversible cone, open the cover with a coin or similar metal object. After use, the cone is simply lowered invisibly back into the floor box.



Design variants

The metal cover with integrated cone is available in silver, aged brass and aged copper.



High load capacity:

- 10 kN over a large area
- 3 kN over a small area
- Can be driven over by a car

Splash-protected:

- IP66 degree of protection when closed
- Surge water protection while in use
- Can be used on floors that require wet cleaning according to DIN EN 50085-2-2

Tough as nails Strong design

The metal hinged cover combines robust construction with elegant design. It is therefore not only very resilient, but also blends in harmoniously with floor coverings such as parquet or stone tiles. When closed, the floors can also undergo wet cleaning thanks to IP66 degree of protection.

**Safe to walk on —
thanks to the latching function**

The hinged cover can be opened easily via the side slide. The integrated spring system ensures comfortable handling. After inserting the cables, you can lock the hinged cover in an in-use position.

This protects the connected cables from damage that could occur when stepping on the cover.



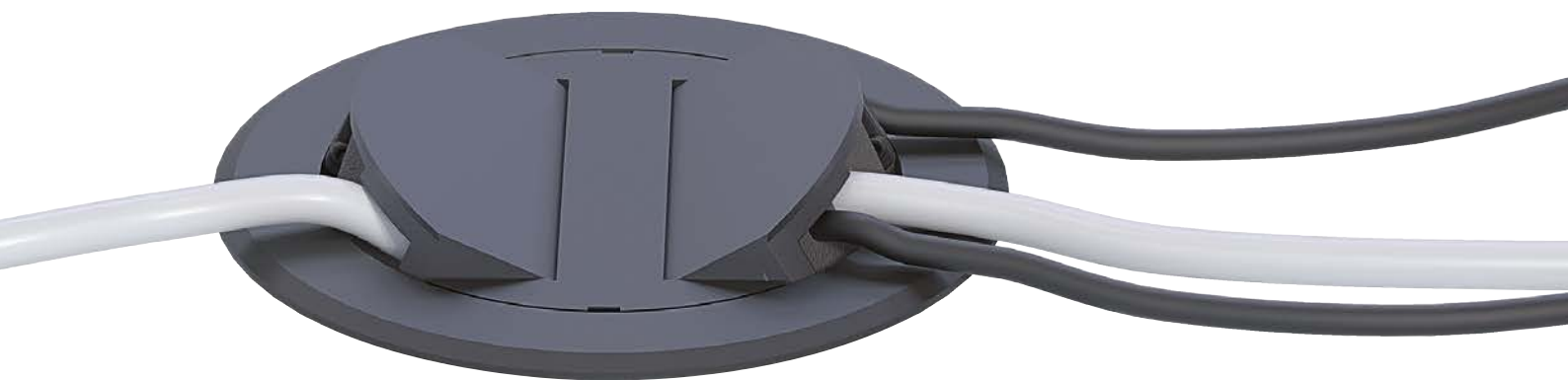
Design variants

The metal cover is available in silver, aged brass and aged copper.



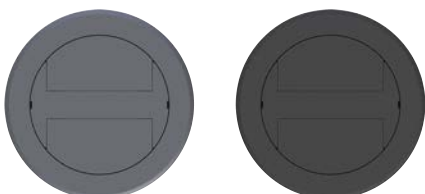
Round thing

The floor socket outlet with plastic cover is perfect for floors that undergo dry cleaning in office and administrative buildings. The high-quality colours of iron grey and deep black blend harmoniously with any flooring, e.g. carpet. The high functionality opens up a wide range of applications.



Various connection options

The cables can exit through two cable outlets positioned opposite each other. After inserting the cables, the hinged cover can be latched in an in-use position to prevent damage caused by accidentally stepping on the cover. Using flat chains to bridge longer cable runs is recommended.



Design variants

The plastic hinged cover is available in RAL 7011 Iron Grey and RAL 9005 Jet Black.

Intelligent design Quick installation

The installation box features numerous impressive design features that make installation particularly easy. The same installation box can be used for all cover variants and floor types (system or screed floor).

01

Compact terminal compartment

The terminal compartment offers sufficient space for up to two SCHUKO® socket outlets and two data or multimedia connections.

02

Separate power supply

The installation box is designed in such a way that the different types of current for power and data connections are safely separated from each other.

03

Dual strain relief

Two strain relief devices can be mounted on the appliance receptacle and also on the bottom of the box.

04

Fastening claws

Three fastening claws securely fix the floor socket outlet in system floors. An additional clamping ring is available for thinner base plates. See page 18.



Installing in screed floors

Quick, simple, clean: Installation in screed floors is particularly easy with the help of our formwork element (SER02) made of halogen-free plastic.

01

Align the formwork body with the ground before casting. It can be connected on 4 sides to up to 16 empty ducts (Ø 20/25 mm) or up to 4 underfloor ducts (190 × 28 mm). This gives you a large number of insertion options and connection options.

02

Once the screed has hardened, cut off the protruding part of the formwork element flush with the surface using a carpet knife.

03

The cylinder of the formwork element is precisely manufactured to the diameter of the installation box and ensures a secure fit. After installing the device in the installation box, you only have to insert it into the installation opening, align it and fix it in place with the fastening claws.

04

Fit the cover, lock it in place and you're done!



04

03

02

01

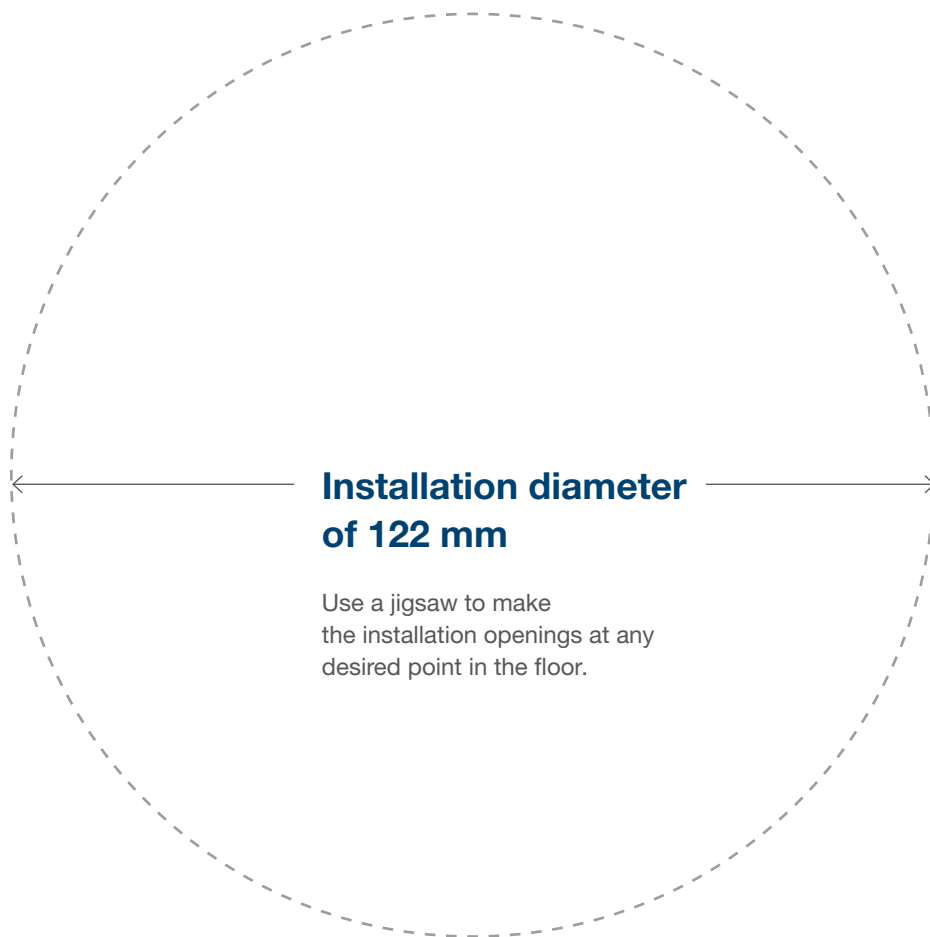
Installing in system floors

System floors – whether as hollow-based or raised floor systems – offer a high degree of flexibility in terms of electrical installation. Our new floor socket outlets also fit perfectly here. Additional floor socket outlets can be added as required for subsequent conversions or retrofitting.

Retaining claws for thick base plates

The three fastening claws ensure a secure fit in base plates of all kinds.





Clamping ring for thin floors

A special clamping ring (BSR02R) from our range of accessories is used for fixing to thin base plates (clamping range <32 mm). The clamping ring is simply screwed onto the floor socket outlet and can be flexibly adapted to the relevant floor thickness.



In Germany, please observe the system floor guideline (SysBöR) in your respective state building code.

Three times more practical: Complete sets

All good things come in threes — with this in mind, three practical complete sets featuring the new floor socket outlets are available alongside the modular options. This simplifies planning, ordering and logistics, reduces workload and costs and saves unnecessary packaging material.

Each set consists of:

- Installation box
- Two-gang SCHUKO® socket outlet
- Mounting plate for two data/multimedia connections
- Cover: Metal hinged cover, metal cover with cone or plastic cover



Order number BSR02D01
Floor socket outlet SET
Metal hinged cover in silver



Order number BSR02D02
 Floor socket outlet SET
 Metal cover with cone



Order number BSR02D03
 Floor socket outlet SET
 Plastic hinged cover in black



BSR02D01

Floor socket outlet complete sets

Minimum installation depth:
Installation diameter:
External diameter:

86 mm
122 mm
150 mm

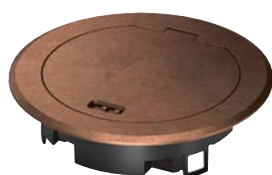
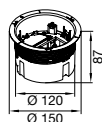
Designation	PU	PrGr	Price	Order no.
Floor socket met. Hinged cover silver SET	1	T080	€282.20 each ★	BSR02D01
Floor socket met. Cone silver SET	1	T080	€305.90 each ★	BSR02D02
Floor socket plastic Hinged cover 9005 SET	1	T080	€129.70 each ★	BSR02D03



BSR02D

Installation box

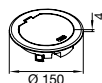
Designation	PU	PrGr	Price	Order no.
Installation box 2x45 for BS R02	1	T080	€66.80 each ★	BSR02D



BSR02MKK

Metal hinged cover

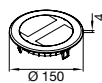
Designation	Colour	PU	PrGr	Price	Order no.
Metal hinged cover for BSR02 aged copper	Copper	1	T080	€219.30 each ★	BSR02MKK
Metal hinged cover for BSR02 aged brass	Brass	1	T080	€219.30 each ★	BSR02MKM
Metal hinged cover for BSR02 silver	Silver	1	T080	€199.40 each ★	BSR02MKS



BSR02KK7011

Plastic hinged cover

Designation	Colour	PU	PrGr	Price	Order no.
Plastic hinged cover for BSR02 Iron Grey	Iron Grey	1	T080	€38.90 each ★	BSR02KK7011
Plastic hinged cover for BSR02 Jet Black	Black	1	T080	€38.90 each ★	BSR02KK9005

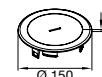


Metal cover with cone

Designation	Colour	PU	PrGr	Price	Order no.
Metal cone for BSR02 aged copper	Copper	1	T080	€244.30 each ★	BSR02MTK
Metal cone for BSR02 aged brass	Brass	1	T080	€244.30 each ★	BSR02MTM
Metal cone for BSR02 silver	Silver	1	T080	€224.40 each ★	BSR02MTS



BSR02MTK



Mounting plates

Designation	PU	PrGr	Price	Order no.
Mounting plate type 01, 19.3x14.8 two-gang	1	T080	€7.60 each ★	BSM012
Mounting plate type 03, 19.5x14.85 two-gang	1	T080	€7.60 each ★	BSM032
Mounting plate type 05, 20.1x14.8 two-gang	1	T080	€7.60 each ★	BSM052
Mounting plate type 030, 12.8x21 one-gang	1	T080	€7.60 each ★	BSM301



BSM012

Clamping ring for a clamping range smaller than 32 mm

Material:

Polyamide (PA)

Designation	PU	PrGr	Price	Order no.
Installation box ring for <32 mm	1	T080	€18.40 each ★	BSR02R



SER02



Protective contact socket outlet, 33° Rastec 45, two-gang

Version:
Rated voltage:
Halogen-free:

2-gang
250 V
Yes

Designation	Colour	PU	PrGr	Price	Order no.
Two-gang socket outlet, 33° 16 A/250 V Rastec 45 pw	Pure white	10	T080	€24.30 each	ESR2339010
Two-gang socket outlet, 33° 16 A/250 V Rastec 45 ro	Orange	10	T080	€24.30 each	ESR2332004
Two-gang socket outlet, 33° 16 A/250 V Rastec 45 mgr	Green	10	T080	€24.30 each	ESR2336029



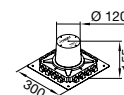
ESR2339010

Plastic formwork element

Designation	PU	PrGr	Price	Order no.
Formwork element R02, H = 155 mm	1	T070	€26.30 each ★	SER02



SER02





Hager Vertriebsgesellschaft mbH & Co. KG
Zum Gunterstal
66440 Blieskastel, Germany

[hager.com](https://www.hager.com)

:hager

B.
Berker

ELCOM.