

Thermostat Code: **17259 - FL259Z**

Description: **Thermostat normally open**

MECHANICAL SPECIFICATIONS

Type of control: **Temperature sensing control.**
Contact closed on rise to control fans, fan filters, heat exchangers or alarm signals

Temperature sensing element: **Bi-metallic**

Degree of protection by enclosure: **IP20**

Electrical connection: **2 screw terminals for 2 conductors size: from 0.75mm² to 2.5mm²**

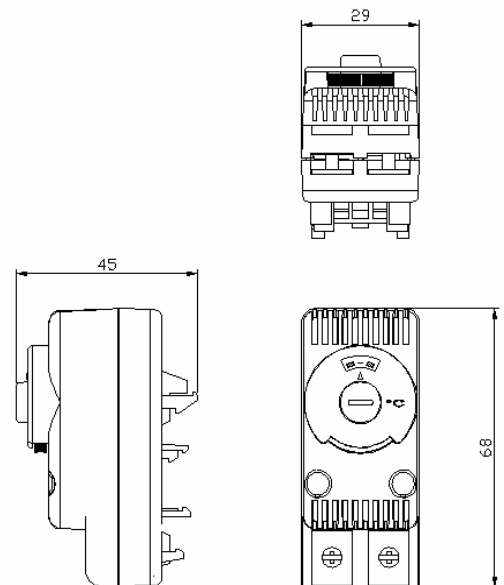
Method of mounting: **Snap-on fixing on profile rail.**
(In addition, the user can choose to fix the thermostat on rail with the 2 screws included in the kit)

Enclosure material: **Plastic UL94V-0. Standard colour is grey RAL 7032**

External dimensions: **68x29x45mm**

Weight: **48g**

DRAWING [mm]



OPERATING FEATURES and APPROVALS

Setting temperature range: **From -10°C to +80°C**

Differential (referred to set point): **+4°K (for rated current ≤ 5A)**
+7°K (for rated current > 5A)

Manufacturing deviation: **±3°K**

Rated voltage range: **110 – 250 V a.c.**

Type of load / Max rated current: **Resistive load / 10 A**

Contact current carrying capacity: **15 A**

Endurance: **> 100,000 cycles**

Applicable standard: **EN 60730-1**

Approvals: **CE**

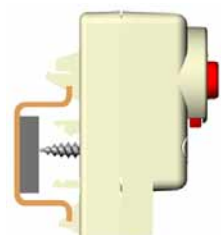
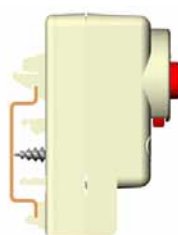
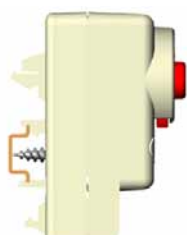
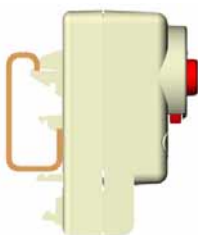
METHOD OF MOUNTING

rail 32x15mm
DIN 46 277/1
EN 50 035

rail 15x5,5mm
DIN 46 277/2
EN 50 045

rail 35x7,5mm
DIN 46 277/3
EN 50 022

rail 35x15mm
DIN 46 277/3
EN 50 022



All specifications, data and drawings are subject to change without notice and are approximate.

CST-A01/3