

6H 5122.c

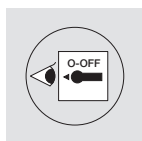
HAD310 / 312  
HAD410 / 412

100 A - 125 A

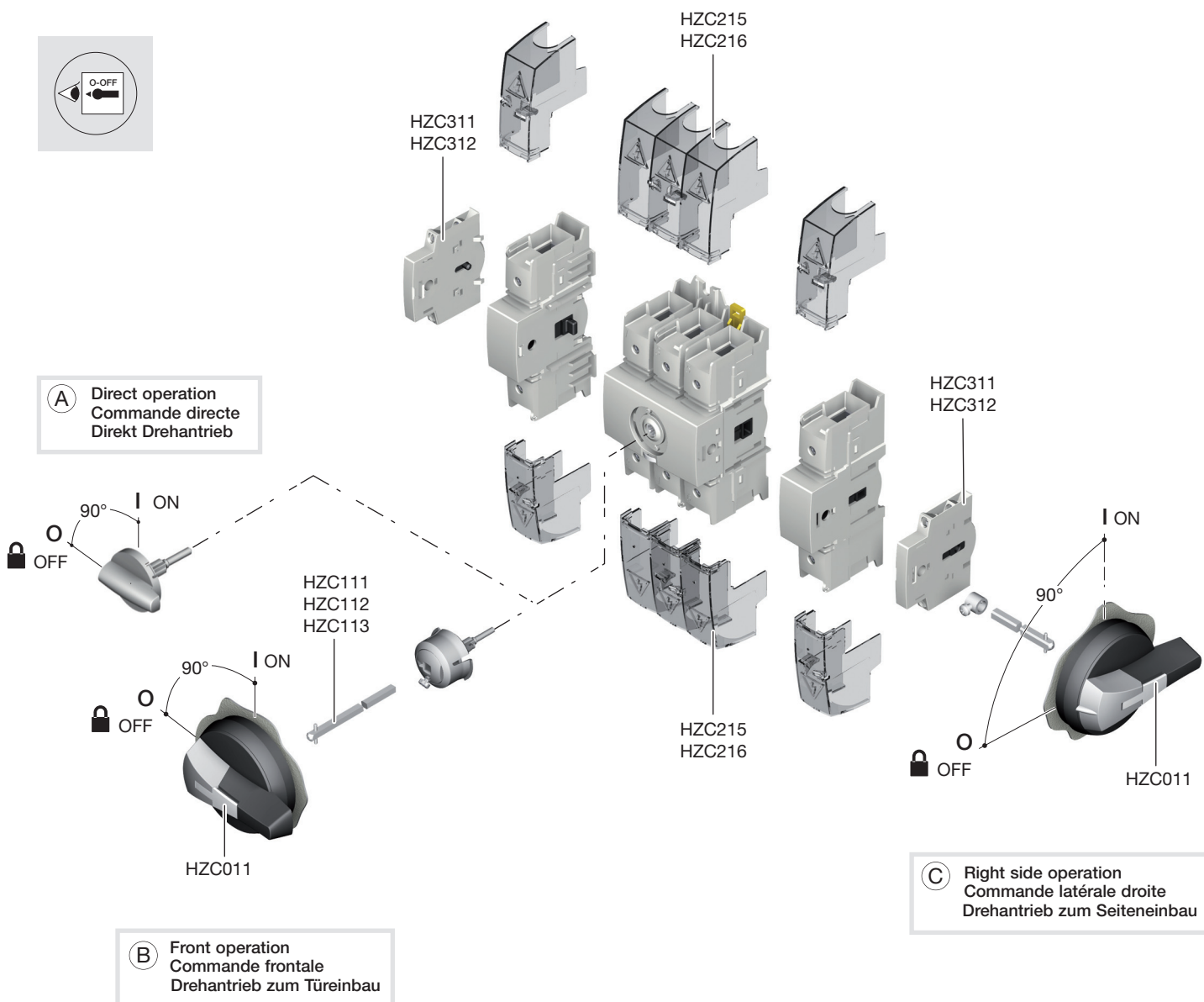
- (GB) Load break
- (FR) Interrupteur sectionneur
- (DE) Lasttrennschalter

User instructions  
Notice d'instructions  
Bedienungsanleitung

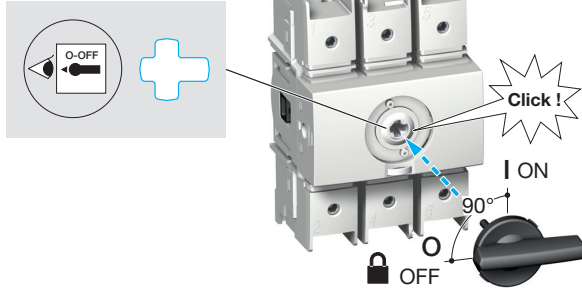
Ref. Switch Réf. Inter. Lasttrennschalter Artikel	Rating Calibre Stromstärke	AC	Ref. Terminal shrouds Réf. Capot cache-bornes Klemmenabdeckungen Artikel
HAD310	3 x 100 A	AC-23A	HZC215
HAD312	3 x 125 A	AC-22A	HZC215
HAD410	4 x 100 A	AC-23A	HZC216
HAD412	4 x 125 A	AC-22A	HZC216



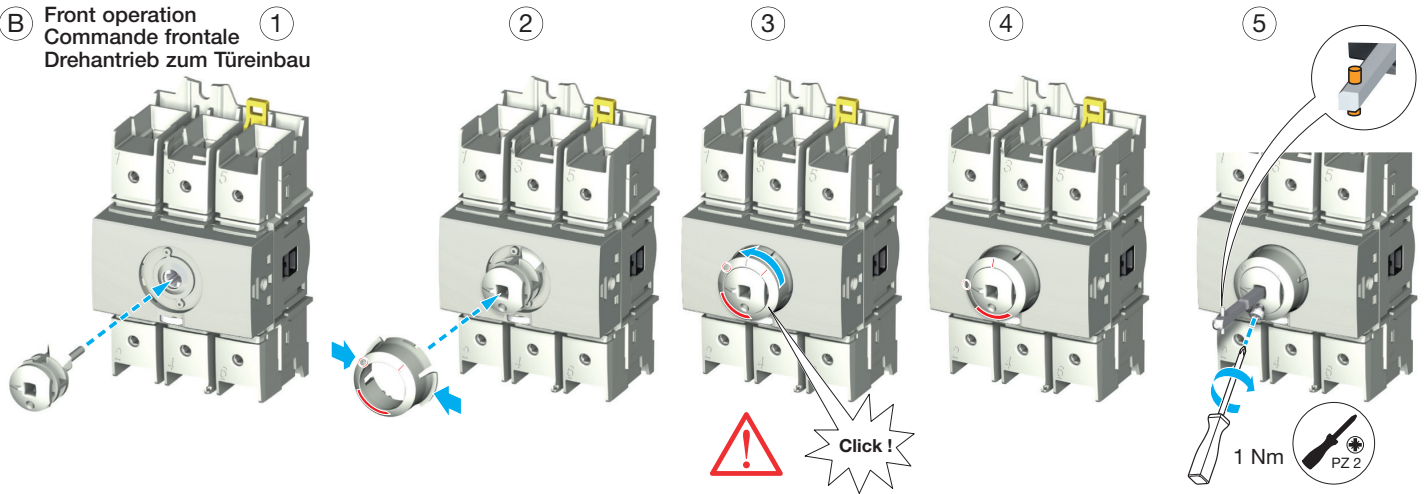
Edition 03/12 - IS 535622-C / RECTO-VERSO / S blanc offset quadri 80g/m<sup>2</sup>



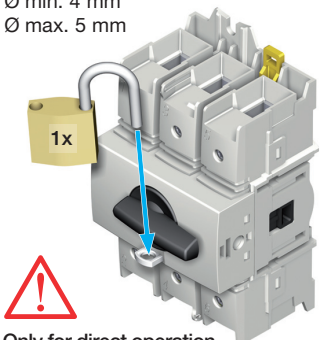
**A** Direct operation  
 Commande directe  
 Direkt Drehantrieb



**B** Front operation  
 Commande frontale  
 Drehantrieb zum Türeinbau



Ø min. 4 mm  
 Ø max. 5 mm



Only for direct operation  
 Uniquement pour commande directe  
 Nur für Direkt Drehantrieb

