

- (EN) Load break  
visible breaking
- (FR) Interrupteur sectionneur  
coupure visible
- (DE) Lasttrennschalter mit sichtbarer  
Trennung
- (AR) قاطع الناحية / قطع مرئي

قاطع الناحية / قطع مرئي

HAE310/312/316  
HAE410/412/416

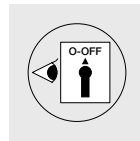
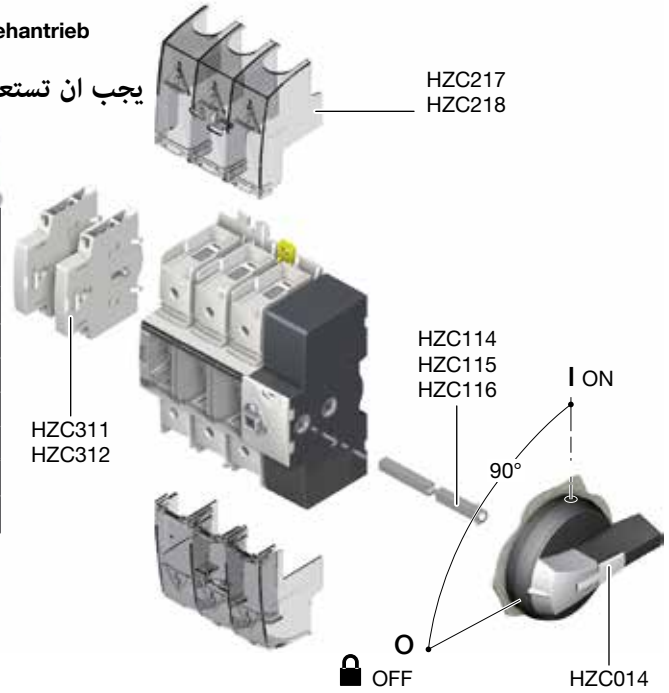
100A-160A



Must be used for side operation with DIN rail  
Doit être utilisé avec un rail DIN  
pour la commande latérale  
Soll mit ein DIN-Schiene für Drehantrieb  
zum Seiteneinbau benutzt sein

يجب ان تستعمل على سكة الأمر الجانبي

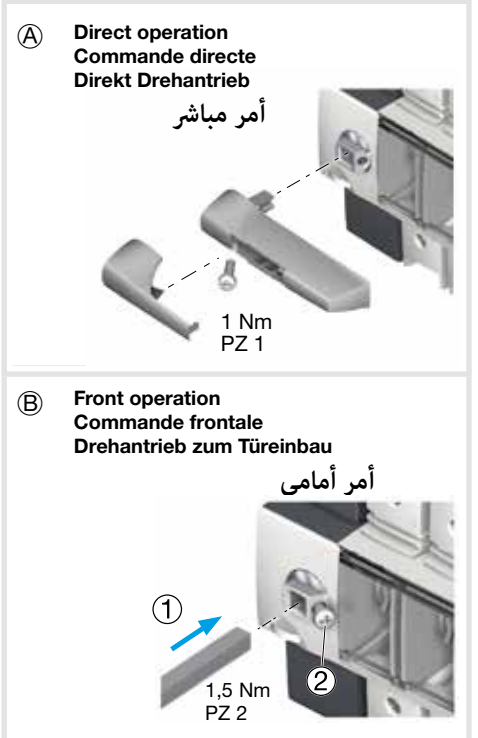
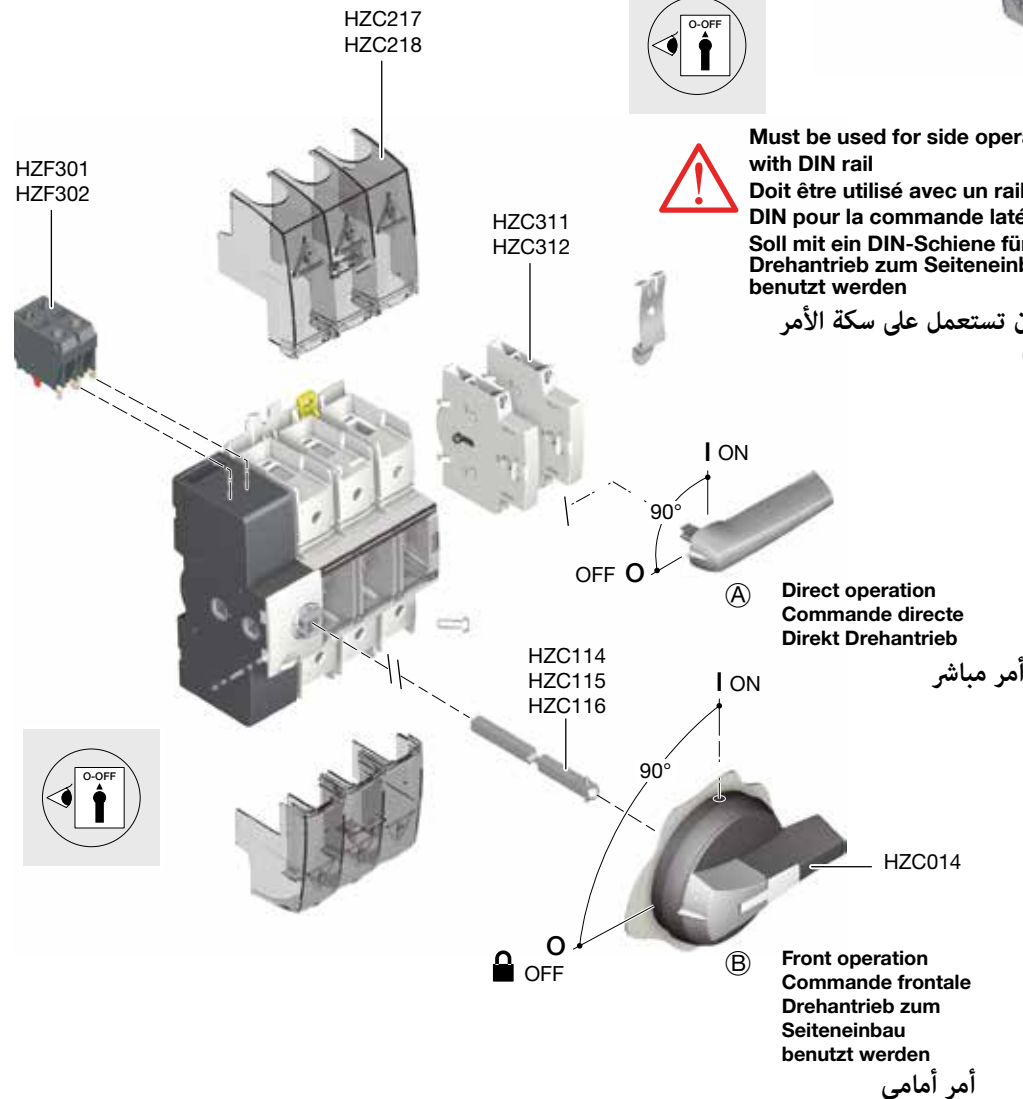
Ref. Switch Réf. Inter. Lasttrennschalter Artikel مرجع المفتاح الكهربائي	Rating Calibre Stromstärke القالب	AC	Ref. Terminal shrouds Réf. Capot cache-bornes Klemmenabdeckungen Artikel مرجع اغطية البراغي
HAE310	3x 100A	AC-23 A	HZC217
HAE410	4x 100A		HZC218
HAE312	3x 125A		HZC217
HAE412	4x 125A		HZC218
HAE316	3x 160A	AC-23 B	HZC217
HAE416	4x 160A		HZC218

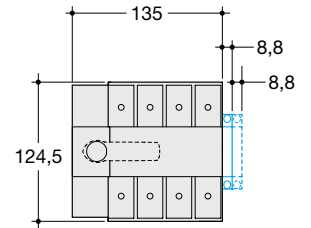
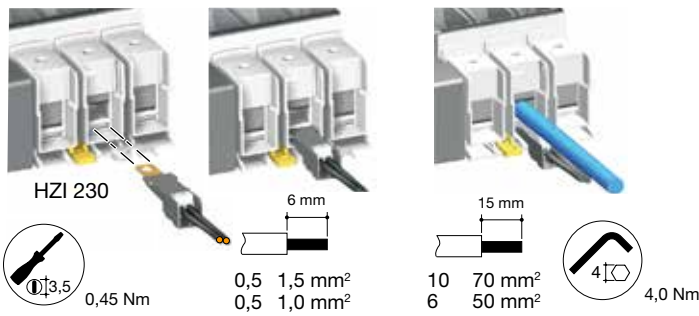
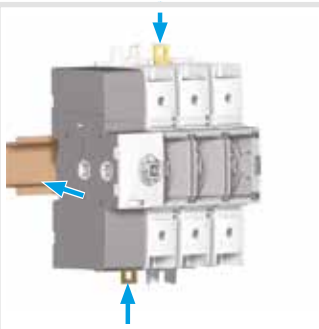


Must be used for side operation  
with DIN rail  
Doit être utilisé avec un rail  
DIN pour la commande latérale  
Soll mit ein DIN-Schiene für  
Drehantrieb zum Seiteneinbau  
benutzt werden

يجب ان تستعمل على سكة الأمر الجانبي

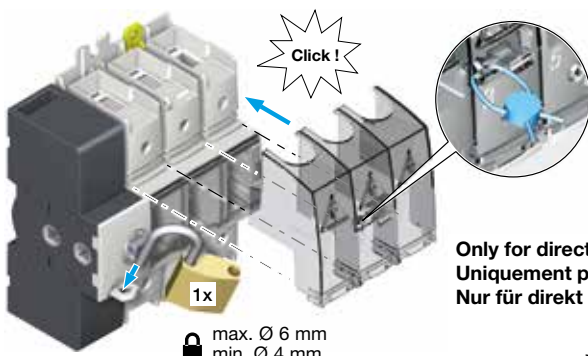
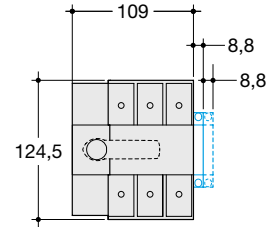
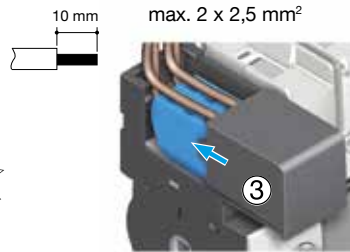
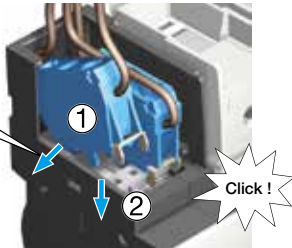
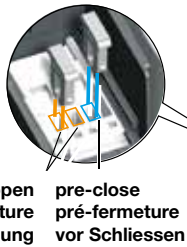
© Right side operation  
Commande latérale droite  
Drehantrieb zum Seiteneinbau  
أمر جهه يمين





PZ 1  
0,8 Nm

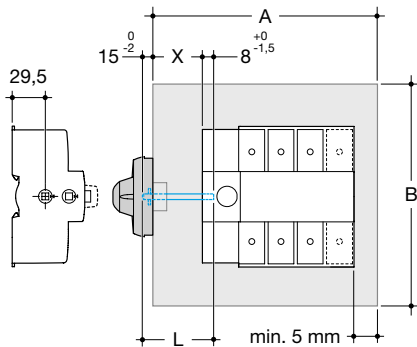
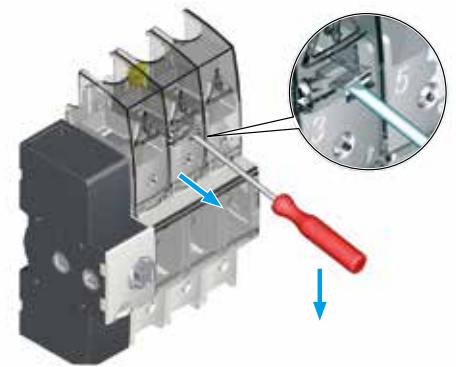
position + pre-open  
position + pré-ouverture  
Stelle + vor Öffnung  
وضعية قبل الفتح



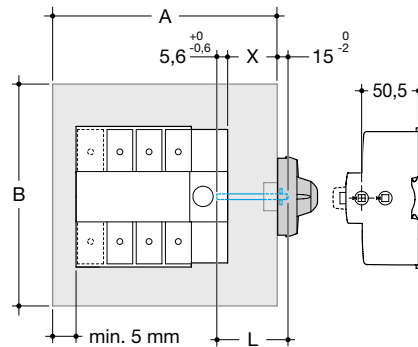
Only for direct operation  
Uniquement pour commande directe  
Nur für direkt Drehantrieb

max. Ø 6 mm  
min. Ø 4 mm

مخصص للتشغيل المباشر

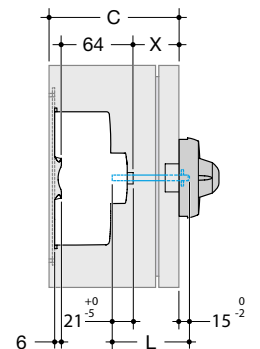


$L = X + 23 \text{ mm}$  X min. 30 mm



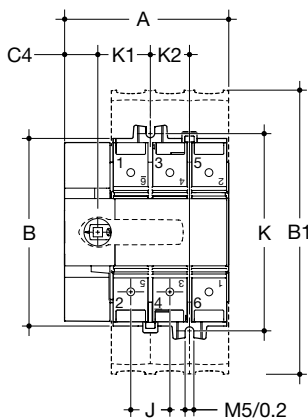
$L = X + 20,5 \text{ mm}$  X min. 30 mm

	A mm	B mm	C mm
HAE310 HAE312 HAE316	163	259	115
HAE410 HAE412 HAE416	189	259	115

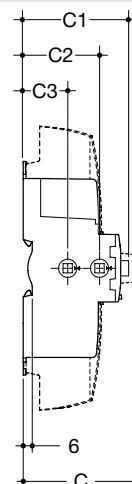
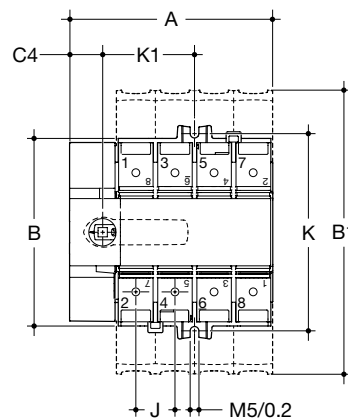


$L = X + 36 \text{ mm}$  X min. 20 mm

3P



4P



	3P mm	4P mm
A	109	135
B	124,5	124,5
B1	189	189
C	84	84
C1	70	70
C2	50,5	50,5
C3	29,5	29,5
C4	22	22
J	26	26
K	132	132
K1	35	61
K2	26	/