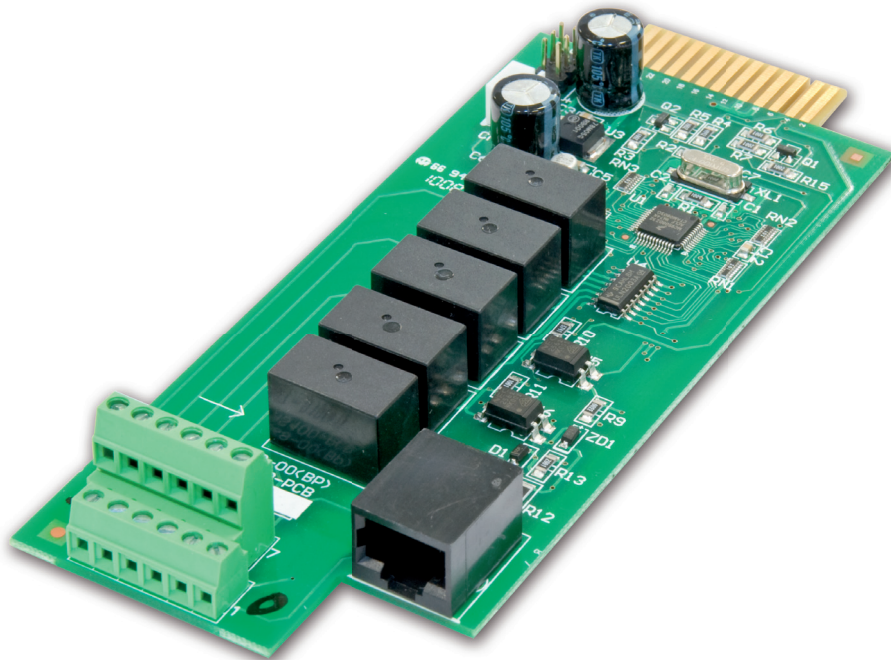


INSTALLATION
MANUAL

Programmable Relay I/O card

EN



CONTENTS

1. FEATURES	5
2. SPECIFICATION	5
3. INTERNAL CIRCUIT	5
4. COMMUNICATION SETUP	6
5. CONFIGURATION	7
5.1 PASSWORD MENU.....	7
5.2 DRY CONTACT MANAGEMENT CARD MAIN MENU.	7

1. FEATURES

This relay I/O card is an UPS management product with 5 relay output contacts for monitoring the status and 1 input contact as UPO, Battery Mode Shutdown, Any Mode Shutdown and Remote ON/OFF UPS.

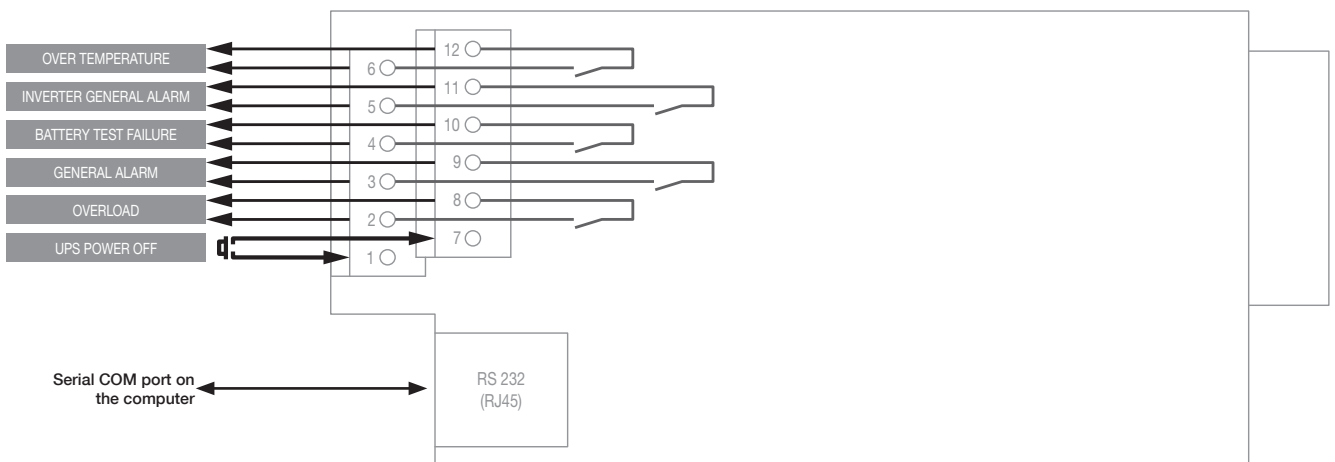
Features:

- Monitor UPS events.
- 5 programmable relay output contacts.
- Configurable normal open or normal close for each relay contact.
- Configurable input signal as UPO, Battery Mode Shutdown, Any Mode Shutdown and Remote ON/OFF UPS.
- Has the ability to protect up to 5 computer.

2. SPECIFICATION

Technical Specification	
Size	130x60 mm
Weight	200 g
Operating temperature	0÷40 °C
Operating humidity	10÷80 %
Contact rating	
Input	DRY contact
Relay R1-R5 AC voltage	240 V max
Relay R1-R5 AC current	1 A max

3. INTERNAL CIRCUIT

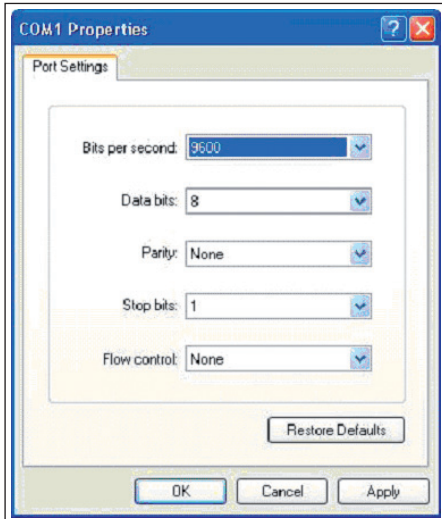


4. COMMUNICATION SETUP

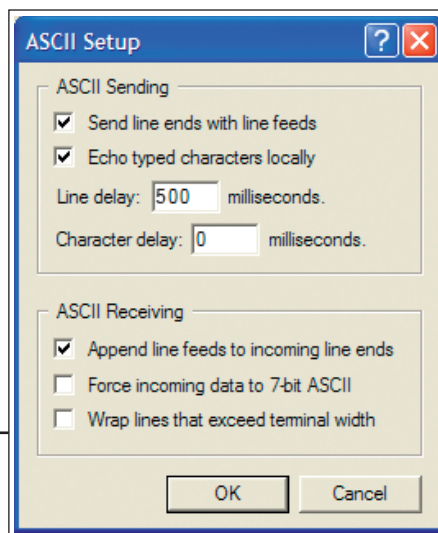
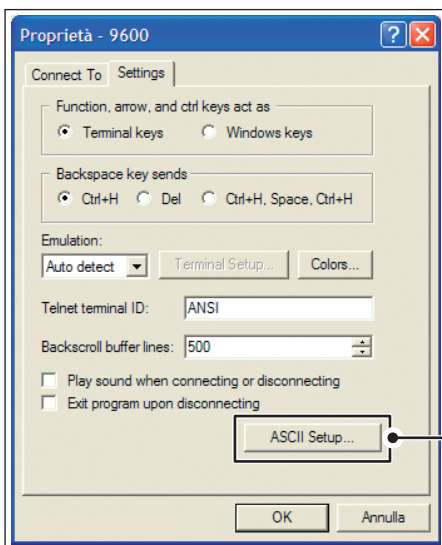


WARNING!
Configure the card with UPS in stand-by or in manual by-pass mode.

1. Connect RJ45 port to pin5 of PC RS232 port.
2. In the Windows environment, launch the Hyper- Terminal program then open the specified COM port.



3. From File >> Property.



5. CONFIGURATION



WARNING!
Configure the card with UPS in stand-by or in manual by-pass mode.

5.1 PASSWORD MENU.

- Type <ENTER> continuity 3 times, the password menu displays.
- Enter Password to Activate Maintenance Menu:
- Enter admin.

5.2 DRY CONTACT MANAGEMENT CARD MAIN MENU.

There are six item can be setting or inquire firmware version, user need base on menu number and enter the correct menu:

Lvl 0	Lvl 1	
1	Function Segment Logic	1 Segment 1 Logic, Current Setting (Normal Open)
		2 Segment 2 Logic, Current Setting (Normal Open)
		3 Segment 3 Logic, Current Setting (Normal Open)
		4 Segment 4 Logic, Current Setting (Normal Open)
		5 Segment 5 Logic, Current Setting (Normal Open)
		6 Segment 6 Logic, Current Setting (Normal Open)
		0 Exit
2	Output Segment Function Configure.	1 Segment 1 function, Current Setting (Overload)
		2 Segment 2 function, Current Setting (General Alarm)
		3 Segment 3 function, Current Setting (Battery Test Failure)
		4 Segment 4 function, Current Setting (Inverter General Alarm)
		5 Segment 5 function, Current Setting (Overtemperature)
		0 Exit
3	Input Segment Function Configure	1 Input Segment Function Configure (UPS Power OFF)
		0 Exit
4	Function Segment Active Delay Time	1 Segment 1 Active Delay Time, Current Setting (Immediately)
		2 Segment 2 Active Delay Time, Current Setting (Immediately)
		3 Segment 3 Active Delay Time, Current Setting (Immediately)
		4 Segment 4 Active Delay Time, Current Setting (Immediately)
		5 Segment 5 Active Delay Time, Current Setting (Immediately)
		6 Segment 6 Active Delay Time, Current Setting (Immediately)
		0 Exit
5	Return to Default Configuration	Return to Default(Y/N)?
6	Firmware Version	It displays the latest firmware version.
0	Exit	1 Exit and Save: exit setting mode and Save change data.
		2 Exit and Without Save: exit setting mode and without save change data
		0 Not Exit: still stay on setting mode, the menu will return to Main menu

Socomec: our innovations supporting your energy performance

1 independent manufacturer

3,200 employees
worldwide

10 % of sales revenue
dedicated to R&D

400 experts
dedicated to service provision

Your power management expert



POWER
SWITCHING



POWER
MONITORING



POWER
CONVERSION



EXPERT
SERVICES

The specialist for critical applications

- Control, command of LV facilities
- Safety of persons and assets
- Measurement of electrical parameters
- Energy management
- Energy quality
- Energy availability
- Energy storage
- Prevention and repairs
- Measurement and analysis
- Optimisation
- Consultancy, commissioning and training

A worldwide presence

8 production sites

- France (x3)
- Italy
- Tunisia
- India
- China (x2)

27 subsidiaries

- Australia • Belgium • China • France
- Germany • India • Italy • Netherlands
- Poland • Romania • Singapore
- Slovenia • Spain • Switzerland • Thailand
- Tunisia • Turkey • UK • USA

80 countries

where our brand is distributed

HEAD OFFICE

SOCOMEK GROUP

SAS SOCOMEK capital 10633100 €
R.C.S. Strasbourg B 548 500 149
B.P. 60010 - 1, rue de Westhouse
F-67235 Benfeld Cedex
Tel. +33 3 88 57 41 41 - Fax +33 3 88 57 78 78
info.scp.isd@socomec.com

YOUR DISTRIBUTOR / PARTNER



I0MITYTWXX04-EN 03 05.2018

www.socomec.com

