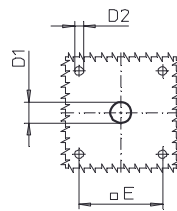
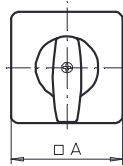
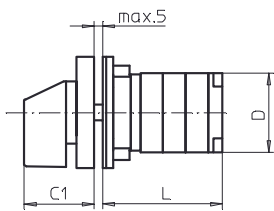
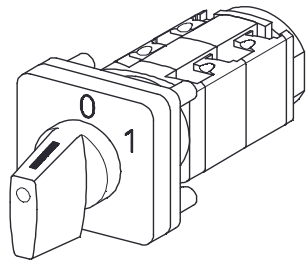


# Front Mounting Switches



**Product line**  
**P200**

**Front mounting switch**  
Operator module of next size

**Four hole mounting**  
48 x 48 mm

**013M1 (IP66)**

Complete switch	Poles	Product line	Rated data (IEC 60947)			Order code number
			Operational current I <sub>e</sub>	Operational power at 380–440 V		
			AC-21A A	AC-23A kW	AC-3 kW	
Rotary Cam Switches Switching angle 30°/45°/60°/90°	1 ... 24	P200	20 25	7,5 11	5,5 7,5	<b>P220 - 61 ... - 013M1</b> <b>P225 - 61 ... - 013M1</b>

SMD modules for basic switch A01		
Mounting form module for 013M1	P200	<b>BFB2 - 013</b>
M-operator module 64 x 64 mm, mounting form 013M1		<b>4AM1</b>
Escutcheon black, handle black		
Legend plate silver, operator module 013M1		<b>FAS4 - .... (FA number)</b>

Type	Dimensions (mm)											each add. stage		
	A	C1	D	D1	D2	E	L with ... stages (max. 12)						7	
							1	2	3	4	5	6	7	
P220	64	39	44	15	5	48	47	60	73	86	99	112	125	13
P221	64	39	44	15	5	48	50,5	67	83,5	100	116,5	133	149,5	16,5
P225	64	39	46	15	5	48	51	66	81	96	111	126	141	15
P226	64	39	46	15	5	48	54,5	73	91,5	110	128,5	147	165,5	18,5